



PATAREI – COMMON HOUSE OF EUROPE

From a vision to a reality

PATAREI – COMMON HOUSE OF EUROPE

ENCOUNTER WITH TALLINN

February 2016. My frequent flyer bonus miles are about to expire. I don't have enough credit for a flight south but I do have enough for a flight to Tallinn. It's winter. The harbour, towers in every direction. I'm impressed. The walk along the beach leads me to the walls of Patarei. They hide things that are unknown to me, arouse my curiosity, cast a spell over me. Two weeks later I have the opportunity to witness one of the most atrocious prisons of Europe. I'm shocked and at the same time I can feel the inviolable value of freedom, human rights and peace. And I find out about the multifaceted efforts in Estonia to reuse the heritage-protected complex.

As a coordinator for European school projects I spent five years travelling European countries together with students and teachers. I experienced how essential personal encounters between people of different cultural backgrounds are. I learnt that the soul of Europe is the cooperation of regions and people. How and where can this immaterial construct be made palpable? Which place can stand as a symbol for these European values?

My professional experience as a civil engineer and project developer lead to the idea of Patarei as a Common House of Europe. The results of further visits to Tallinn, of many conversations with people who are involved and experts as well as research are the basis for this presentation.

"I want wide horizons" – this wish of mine manifests itself in the concept of the Patarei tower. This could, as a new construction, fulfil its purpose of encounters fast – independent of the renovation works. It is the connecting element in the axis Toompea – Helsinki.

Our ideas, that take into account many different interests, are meant to be contributions to the imminent restructuring of Patarei. Ideally they will be incorporated in an international architectural competition.

Carsten Witt
Founder of Go Europe!
June 2018

PATAREI – COMMON HOUSE OF EUROPE

EUROPE IN TALLINN

“Go Europe!” is the name of a non-profit initiative that started in the Portuguese capital Lisbon in October 2017 – on foot and by bike. Its end goal: to reach Tallinn, the capital of Estonia by November 2018.

Why undertake this journey through almost all European countries? Go Europe! wants to set an example for what Europe stands for: its borders are open, its people are interested in each other, its cultural diversity is unique, its future is open and sustainably shapeable. All this is being lived, it is known and is a feature of Europe. And yet this treasure is in danger. A confident civil society has means and measures to shape things in a constructive way: encounters and exchange on a personal basis are the putty of a European people. Economy and tourism contribute to this, as well as the European student exchange programme ERASMUS. All European institutions – the European Parliament, the European Commission, the European Court of Justice, the European Central Bank – have their own place. One for inter-European encounters has yet to be founded. A steady address for inter-European encounters is long overdue.



PATAREI – COMMON HOUSE OF EUROPE

GENESIS OF A CITY

The life stories of millions of people converge in cities. Each of these cities is unique, because there are as many perspectives and pictures of it as there are people who inhabit it. Tallinn's urban space also represents everything in one in a very special way: historic-public space and private space, developed space and the image of what is yet to come, the possible realization of ideas. As in other cities the rise and fall of cultural and political history are visible in many ways: it is literally inscribed in the ground and we can read what marks architecture leaves at each time in Tallinn. Urban life is always subject to change – but always keeps its identity and character.



REPRESENTATION BY A BUILDING

Uncontrolled building does not exist. Every building is erected with a specific intention, often following an ideological programme. The fortress Patarei is an impressive example: while it was originally designed as a sea fortress, it was used as a prison for most of its time. In the last two decades it has been nothing but a shell in need of redevelopment. What significance could be assigned to this testimony of past times in this uprising, modern and young city of Tallinn? How can this monument pay respect to the memory of pain and injustice as well as remind the civil society to claim its right to peace and freedom? Conversion and revival could lead to a transformation of this place of horrors.

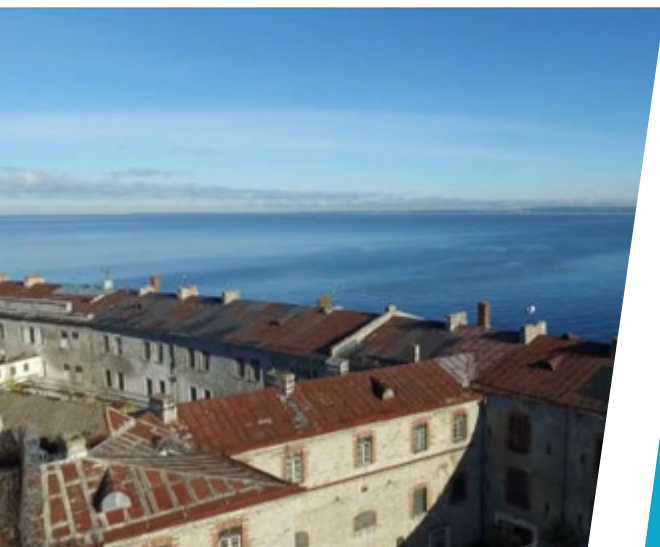
PATAREI

PATAREI – COMMON HOUSE OF EUROPE

STRUCTURAL CHANGE

Urban structures are also subject to change through the conversion of commercial and military areas. Glowing examples of this in Tallinn are the Rotermani Kvartal and Telleskivi Creative City. Besides constructional circumstances the requirements of urban heritage conservation usually have to be met when converting a historic urban building. The investor's economic guidelines make a balanced procedure necessary.

The Patarei complex lies at an exposed spot between Linnahall and Seaplane Harbour. Its proximity to the historic centre, upscale housing in close vicinity, the uprising quarter Kalamaja but also surrounding idle buildings appoint a special role to the development and future use of Patarei in Tallinn.



CONVERSION & EXTENSION

The fortress Patarei will keep its historical structure. But the building from a past, dark age will attain a new significance transcending its historic context. Cautious structural changes will not only bring visual but also contentual modifications. Everywhere else in the world burdened places are being “neutralised” by conversion, the building and the site are being “healed”. This is being done with respect to the pain that people have been subjected to. Soon there will be no more living witnesses of the past at Patarei. They alone could tell about oppression through the dictatorship and the human agony that came with it. Documents like photos, films, diaries and objects will reconstruct this emotional dimension. The proposed museum will ensure that.

Past, present and future will find their space under the roof of the Common House of Europe. As a supplement to the historic complex Go Europe! suggests to enrich Tallinn with a new tower: The young, outgoing Europe can meet here. Look inside: The historically charged space lies at your feet. Now look outside: The view opens up to the proud Estonian capital and far into the Baltic Sea and the future.

PATAREI – COMMON HOUSE OF EUROPE

GOALS AND MEASURES

1. CONSTRUCTION OF A TOWER REFERRING TO THE TOWERS OF TOOMPEA

Construction of a tower building as a reference to the many towers in the castle walls of Toompea. The new tower will comprise the same floor space as the block building that is to be demolished and is probably cheaper than refurbishing it.

2. VIEW FROM THE TOWER ON THE AXIS TOOMPEA AND HELSINKI

The view from the tower that surmounts Patarei enables a connection between the old city and Toompea lying south and over the sea to Finland lying north.

3. DEMOLISHMENT OF THE BLOCK BUILDING

Liberation of the divided yard by demolishing the block building, which had been erected later to comprise further prison cells and facilitate the supervision of the space between the buildings.

4. BIG SPACE AREA

Design of an area with a roof for events – natural stage because of higher lying southern part and terraced yard levels. View from outside into yard.

5. VISTAS

Transparent openings in the ground floor zones, view into the inner area from outside.

6. SEA VIEW THROUGH GLASS ARCADES

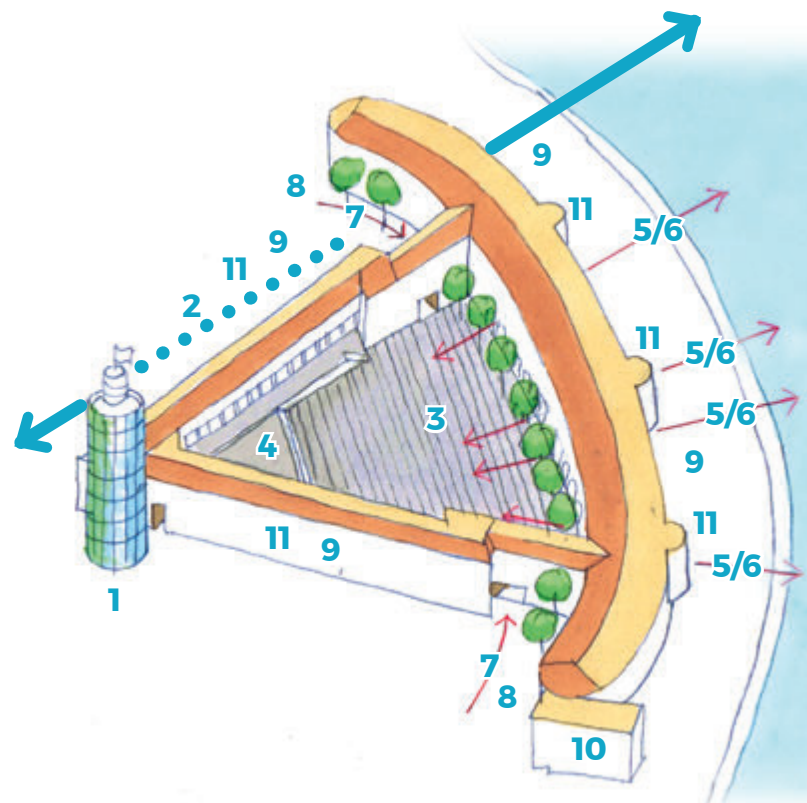
Opening to the sea instead of “barracking”. Arcades sheltered by glass.

7. ENTRANCES

Entrances and views from all sides, bright colours and light concepts.

8. GREEN ZONE

Planted tree line, accompaniment of the building’s shape as a green belt in the yard.



9. GLAZED LOGGIAS IN FRONT OF INWARD LYING WINDOWS AS SOUND AND CLIMATE PROTECTION

Existing window openings of sound polluted facades as glazed arcades (apartments, offices, hotel). Openings in all sound polluted floors with a second glazing as sound and climate protection. Interspace utilisable as loggia, conservatory.

10. MUSEUM

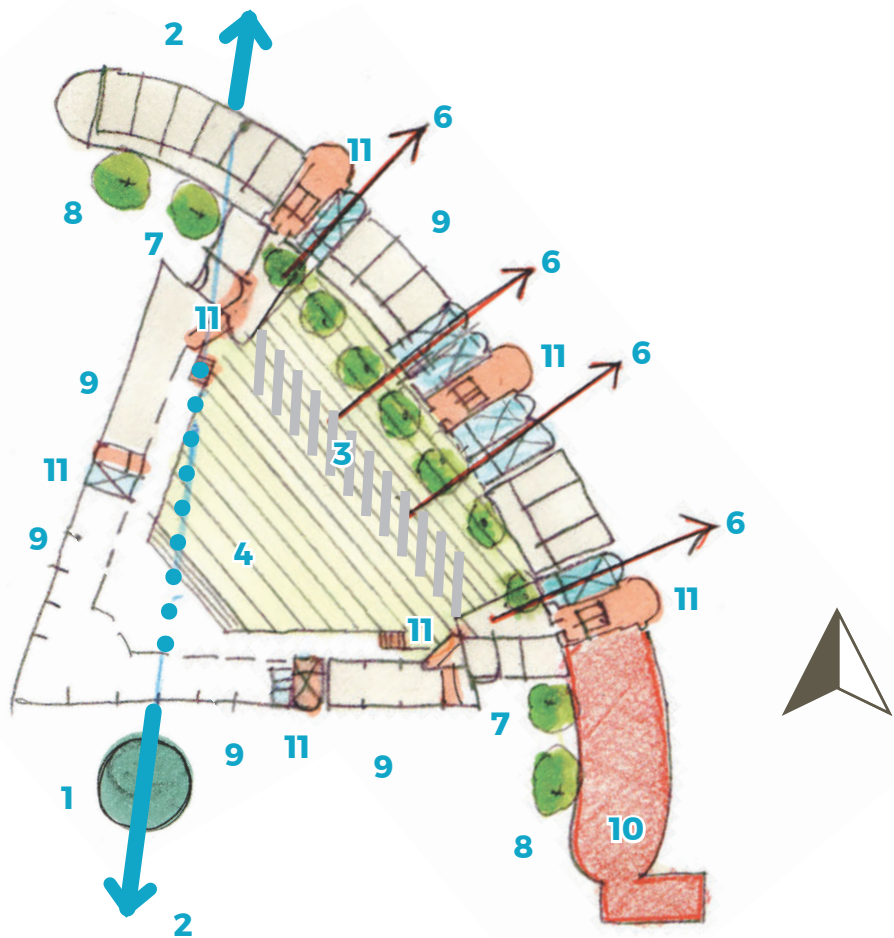
Establishment of a museum in the southern wing of Patarei with information on the history of Patarei and insights into the free Estonian democracy.

11. EXISTING CIRCULATION

Existing stair wells for the inner circulation.

(Necessary car parks and utility spaces have not yet been considered)

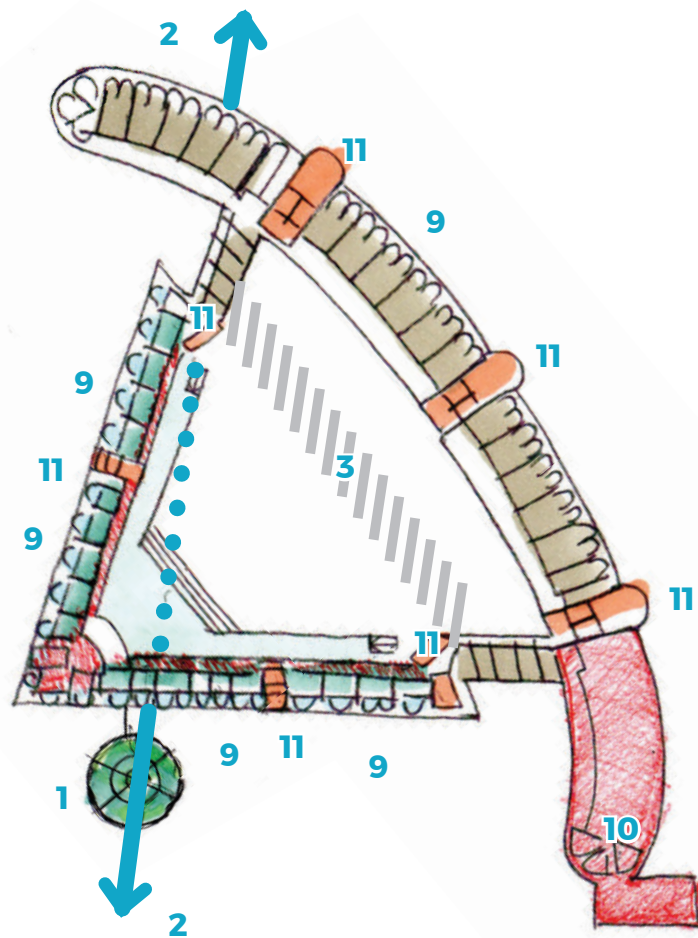
PATAREI – COMMON HOUSE OF EUROPE



GROUND FLOOR PLAN

- 1 CONSTRUCTION OF A TOWER REFERRING TO THE TOWERS OF TOOMPEA (SAME FLOOR SPACE AS BLOCK BUILDING THAT IS TO BE DEMOLISHED)
- 2 VIEW FROM THE TOWER ON THE AXIS TOOMPEA AND HELSINKI
- 3 DEMOLISHMENT OF THE BLOCK BUILDING
- 4 BIG SPACE AREA, MEETING PLACE
- 6 GLAZED PASSAGES, SEA VIEW THROUGH GLASS ARCADES
- 7 ENTRANCES
- 8 GREEN ZONE
- 9 GLAZED LOGGIAS IN FRONT OF INWARD LYING WINDOWS AS SOUND AND CLIMATE PROTECTION
- 10 MUSEUM
- 11 EXISTING CIRCULATION

PATAREI – COMMON HOUSE OF EUROPE



FIRST / SECOND FLOOR PLAN

- 1 CONSTRUCTION OF A TOWER REFERRING TO THE TOWERS OF TOOMPEA (SAME FLOOR SPACE AS BLOCK BUILDING THAT IS TO BE DEMOLISHED)
- 2 VIEW FROM THE TOWER ON THE AXIS TOOMPEA AND HELSINKI
- 3 DEMOLISHMENT OF THE BLOCK BUILDING
- 9 GLAZED LOGGIAS IN FRONT OF INWARD LYING WINDOWS AS SOUND AND CLIMATE PROTECTION
- 10 MUSEUM
- 11 EXISTING CIRCULATION

PATAREI – COMMON HOUSE OF EUROPE

BUSINESS MODEL

1. BASIC DATA

Plot	40.083 m ²
Useful area main building	ca. 21.000 m ²
Useful area adjoining buildings + future area by building law	ca. 20.000 m ²

2. INITIATOR

Go Europe gGmbH

3. OWNERSHIP STRUCTURE

Patarei – Common House of Europe SCE (Societas Cooperative Europaea / European Co-operative)

3.1 Member of SCE

- corporations
- individual persons

3.2 Associate partner

- countries
- regions
- rural districts
- municipalities
- associations/unions
- edification and cultural facilities
- chambers of commerce
- foundations

4. APPROXIMATED INVESTMENT COST

Acquisition, project development, realization 100 Mio. Euro

5. FINANCIAL STRUCTURE

Equity, members and support programs

Loan, public and private credits

PATAREI – COMMON HOUSE OF EUROPE

ABOUT US



GO EUROPE gGMBH

Dr. Carsten Witt
Nördliche Münchner Straße 47
82031 Grünwald
Email cw@go-europe.eu
Telephone +49 173 3004091

EDITOR / COORDINATOR

Frauke Liesenborghs
fl@go-europe.eu

ASSISTANT

Jorinde Fischer

ARCHITECTURE

Uwe Graf

CONSULTANTS

Monika Müller-Rieger
Hans-Christian Täubrich
Dr. Rupert Graf Strachwitz

TRANSLATION

Bettina Knopp

GRAPHIC DESIGN

Amanda Kronschnabl

IMAGE EDITOR

Peter Ludwig

PHOTOS

from: PATAREI COMES TO LIFE
<https://www.youtube.com/watch?v=xsHr84D8mqM>
(pages 4 and 5)

ARCHITECTURAL DRAWINGS

Uwe Graf
(pages 6, 7, and 8)